

PERISERVICE - INSTALLATION MANUAL

Table of Contents

| | |
|---|---|
| 1.Introduction | 3 |
| 2.Application Installation Procedure..... | 3 |
| 3.Post Installation Procedure..... | 7 |

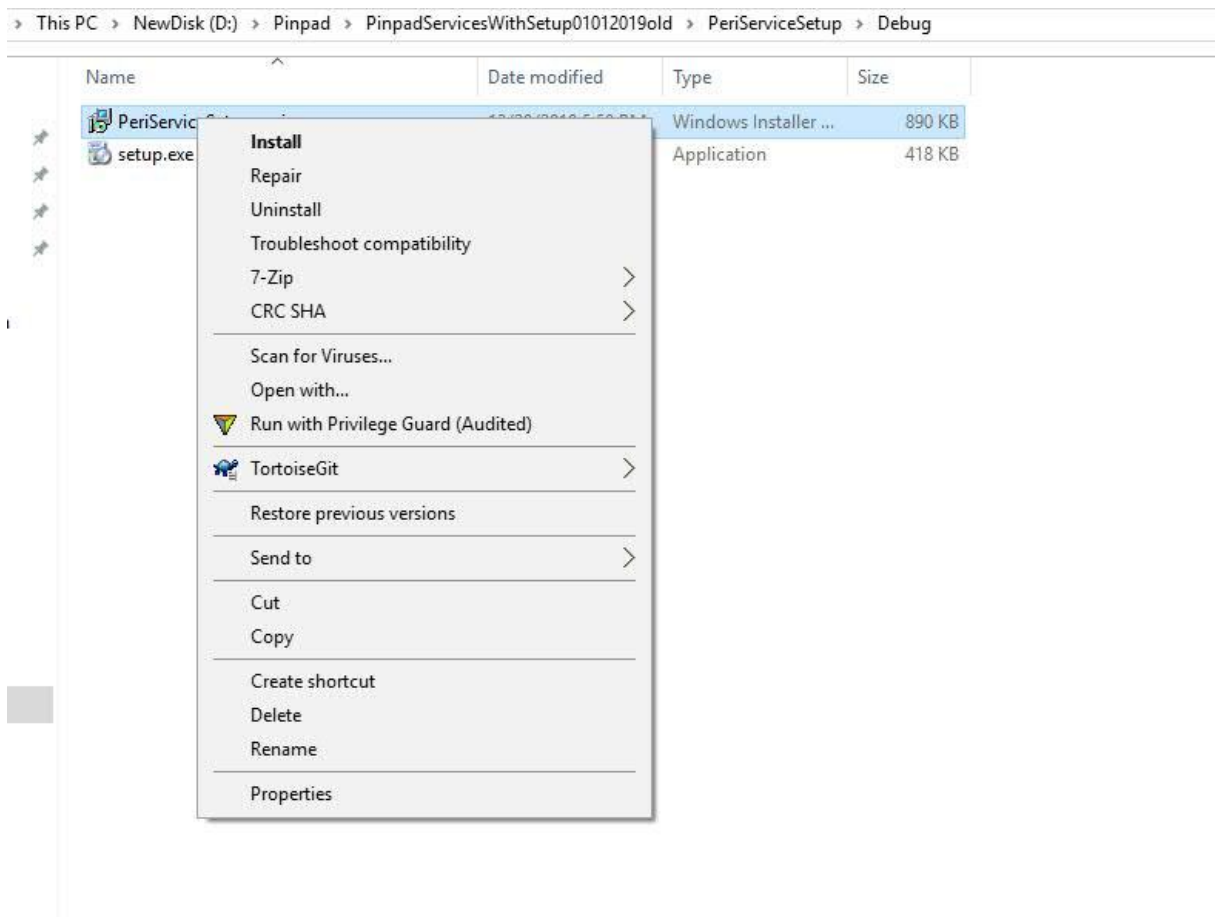
1.Introduction

This peripheral application designed to Provide Services for Pinpad Device.

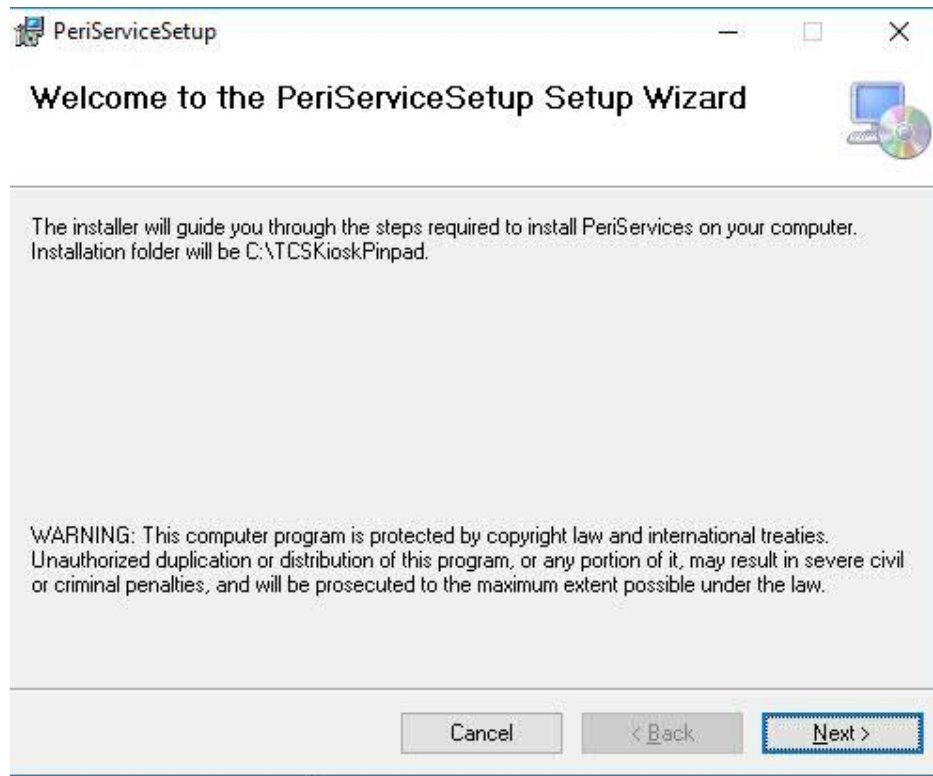
2.Application Installation Procedure

The following procedures are required for installing the Peripheral Service application

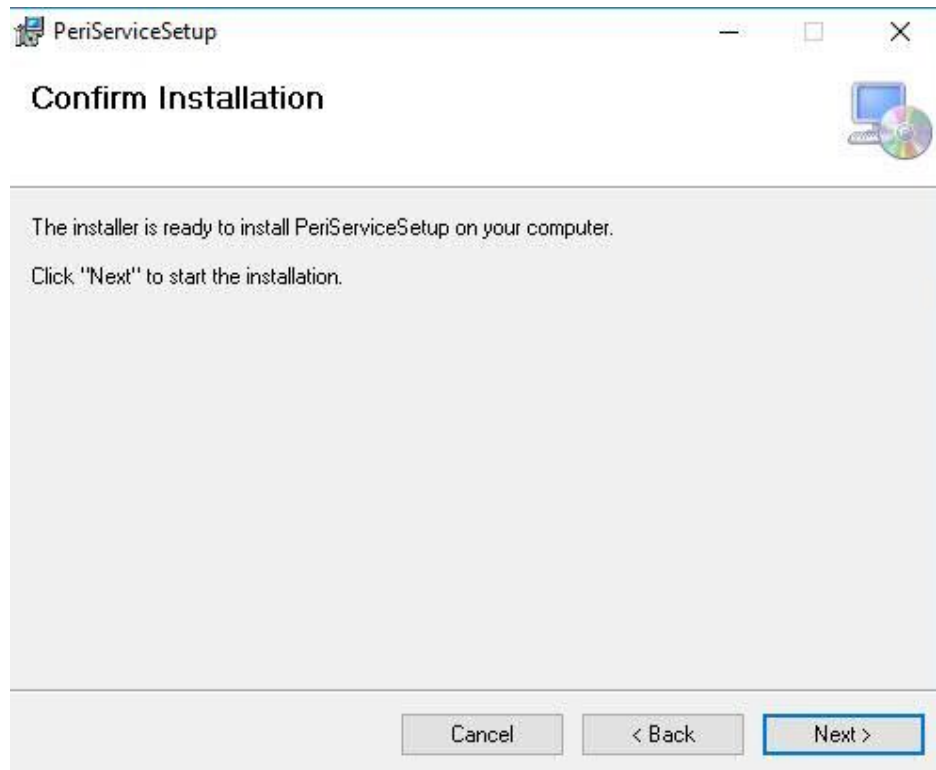
- Open the Release folder from the given Package.
- Right Click on the setup file and Click on the **“Install”** option as shown in the image.



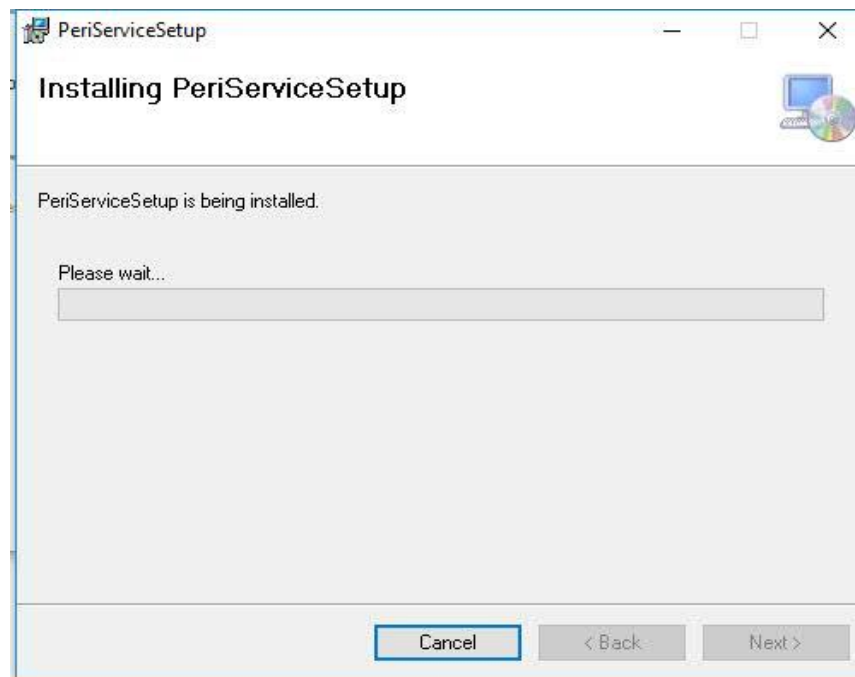
- After Clicking that option and Click on **“Next”** button as shown in the image to install that application in C:\TCSKioskPinpad



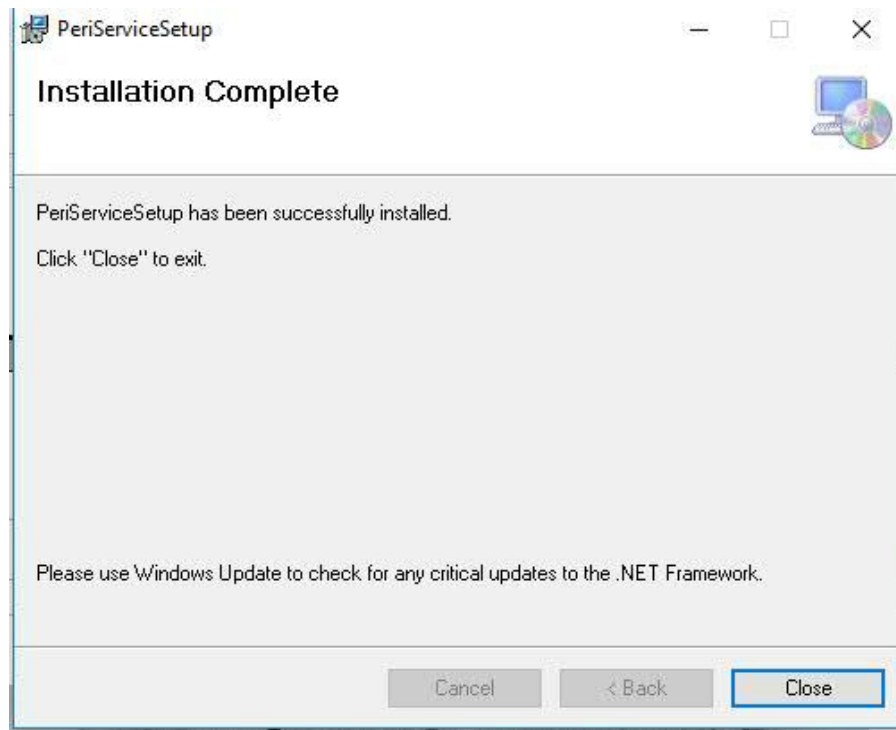
- Click on the “**Next**” button as in the image to confirm installation.



- Wait for the installation has to complete.



- Once it is completed click “**Close**”.



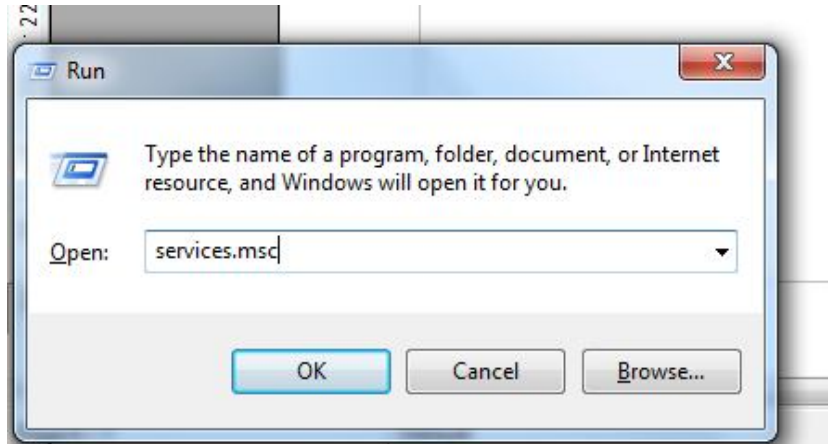
The application is successfully installed in the location [C:\TCSKioskPinpad](#).

3.Post Installation Procedure

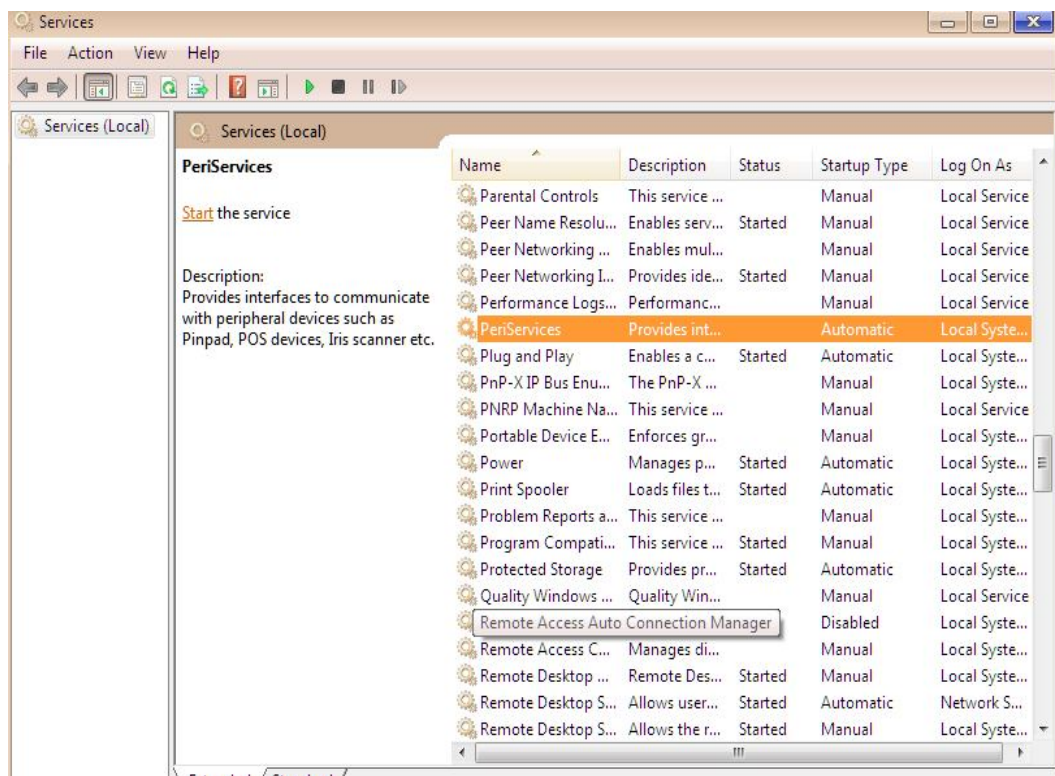
Once the installation is completed, the service has to be started only once.

To start the service

- Open command (Ctrl+r). Type services.msc as shown in the image and click “**ok**”.



- You will find list of services. Search for “**Periservice**”. Right click on that Service and you will get a “**Start**” option . Click on that Start option to Start the service.



NOTE:

This service should be started only once after installation.

